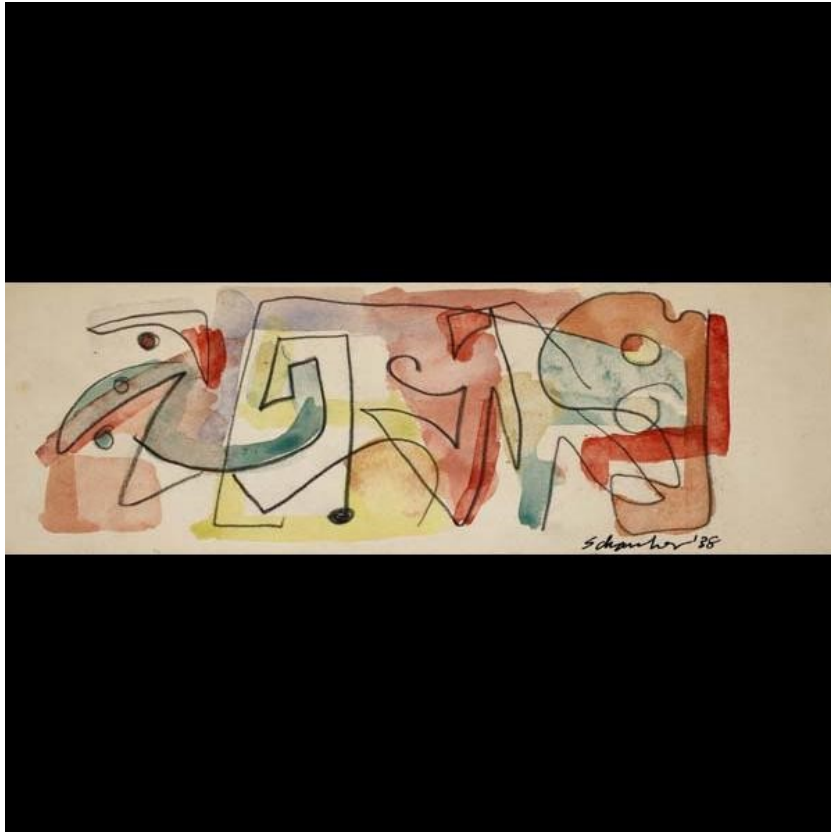


# the Davis.

DAVIS MUSEUM AT WELLESLEY COLLEGE

[http://dms.wellesley.edu/detail.php?](http://dms.wellesley.edu/detail.php?term=schanker&module=objects&type=keyword&x=0&y=0&kv=23334&record=12&page=1)

[term=schanker&module=objects&type=keyword&x=0&y=0&kv=23334&record=12&page=1](http://dms.wellesley.edu/detail.php?term=schanker&module=objects&type=keyword&x=0&y=0&kv=23334&record=12&page=1)



**Artist:** Schanker, Louis

**Culture:** American

**Title:** *Study for WNYC Mural*

**Date:** 1938

**Medium:** Gouache and pencil

**Dimensions:** sheet: 3 7/16 in. x 10 9/16 in. (8.7 cm x 26.8 cm); image: 3 7/16 in. x 10 9/16 in. (8.7 cm x 26.8 cm)

**Object Type:** Drawings

**Credit Line:** Museum purchase, The Nancy Gray Sherrill, Class of 1954, Collection Acquisition Fund

**Object No.:** 2007.5

**Location:** Not On View

**Rights:** Copyright is retained in accordance with U.S. Copyright laws.



**Artist:** Schanker, Louis

**Culture:** American

**Title:** *Composition with Figures*

**Date:** 1942

**Medium:** Woodcut

**Edition:** 2/10

**Dimensions:** sheet: 11 3/4 in. x 18 1/4 in. (29.8 cm x 46.4 cm); images: 8 in. x 14 in. (20.3 cm x 35.6 cm)

**Object Type:** Prints

**Credit Line:** The Nancy Gray Sherrill, Class of 1954, Collection

**Object No.:** 2000.233

**Location:** Not On View

**Rights:** Copyright is retained in accordance with U.S. Copyright laws.



**Artist:** Schanker, Louis

**Culture:** American

**Title:** *Trio*

**Date:** 1935

**Medium:** Woodcut in color

**Dimensions:** sheet: 7 7/8 in. x 12 3/8 in. (20 cm x 31.4 cm)

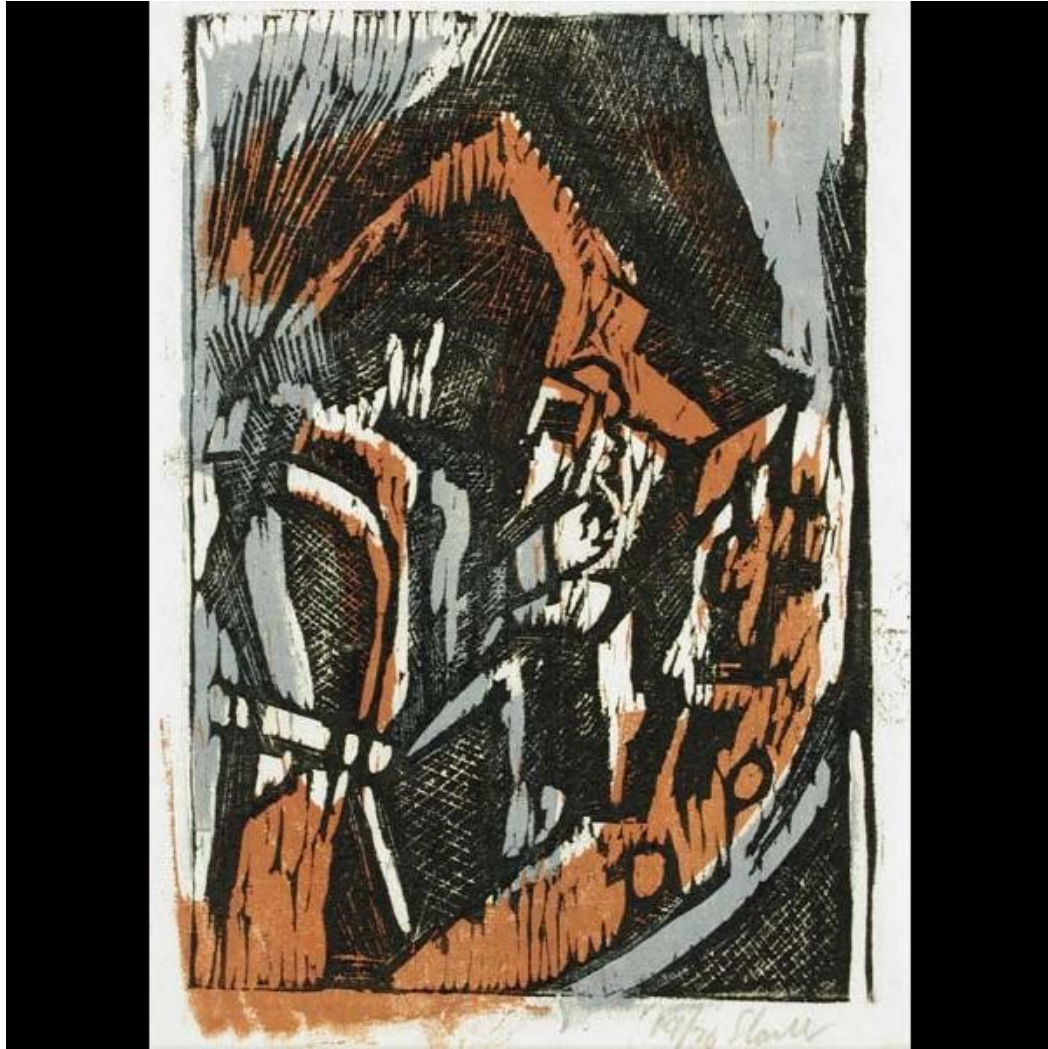
**Object Type:** Prints

**Credit Line:** The Nancy Gray Sherrill, Class of 1954, Collection

**Object No.:** 2009.545

**Location:** Not On View

**Rights:** Copyright is retained in accordance with U.S. Copyright laws.



**Artist:** Schanker, Louis

**Culture:** American

**Title:** *Man At Piano*

**Date:** 1936

**Medium:** Woodcut and color

**Edition:** 20 with 10 trial proofs

**Dimensions:** sheet: 11 1/2 in. x 7 3/4 in. (29.2 cm x 19.7 cm); image: 8 1/2 in. x 5 7/8 in. (21.6 cm x 14.9 cm)

**Object Type:** Prints

**Credit Line:** The Nancy Gray Sherrill, Class of 1954, Collection

**Object No.:** 2009.546

**Location:** Not On View

**Rights:** Copyright is retained in accordance with U.S. Copyright laws.



**Artist:** Schanker, Louis

**Culture:** American

**Title:** *Clown*

**Date:** 1934

**Medium:** Woodcut

**Edition:** 10

**Dimensions:** sheet: 12 in. x 13 1/8 in. (30.5 cm x 33.3 cm); image: 9 3/4 in. x 10 in. (24.8 cm x 25.4 cm)

**Object Type:** Prints

**Credit Line:** The Nancy Gray Sherrill, Class of 1954, Collection

**Object No.:** 2009.547

**Location:** Not On View

**Rights:** Copyright is retained in accordance with U.S. Copyright laws



**Artist:** Schanker, Louis

**Culture:** American

**Title:** *Cafe #1*

**Date:** 1938

**Medium:** Woodcut in color

**Edition:** 35 with two trial proofs

**Dimensions:** sheet: 10 7/8 in. x 8 1/4 in. (27.6 cm x 21 cm)

**Object Type:** Prints

**Credit Line:** The Nancy Gray Sherrill, Class of 1954, Collection

**Object No.:** 2009.548

**Location:** Not On View

**Rights:** Copyright is retained in accordance with U.S. Copyright laws.



**Artist:** Schanker, Louis

**Culture:** American

**Title:** *Three Men on Horses*

**Date:** 1938

**Medium:** Woodcut on color

**Edition:** 28 with 12 trial proofs

**Dimensions:** sheet: 14 in. x 18 3/8 in. (35.6 cm x 46.7 cm)

**Object Type:** Prints

**Credit Line:** The Nancy Gray Sherrill, Class of 1954, Collection

**Object No.:** 2009.549

**Location:** Not On View

**Rights:** Copyright is retained in accordance with U.S. Copyright laws.



**Artist:** Schanker, Louis

**Culture:** American

**Title:** *Man With A Drum*

**Date:** 1937

**Medium:** Relief print

**Dimensions:** sheet: 10 5/8 in. x 7 1/2 in. (27 cm x 19 cm); image: 7 7/8 in. x 4 in. (20 cm x 10.2 cm)

**Object Type:** Prints

**Credit Line:** The Nancy Gray Sherrill, Class of 1954, Collection

**Object No.:** 2009.550

**Location:** Not On View

**Rights:** Copyright is retained in accordance with U.S. Copyright laws.





**Artist:** Schanker, Louis

**Culture:** American

**Title:** *Abstraction*

**Date:** ca. 1940

**Medium:** Monoprint (probably made on plaster)

**Dimensions:** sheet: 12 13/16 in. x 17 5/16 in. (32.5 cm x 44 cm); image: 9 3/8 in. x 17 1/4 in. (23.8 cm x 43.8 cm)

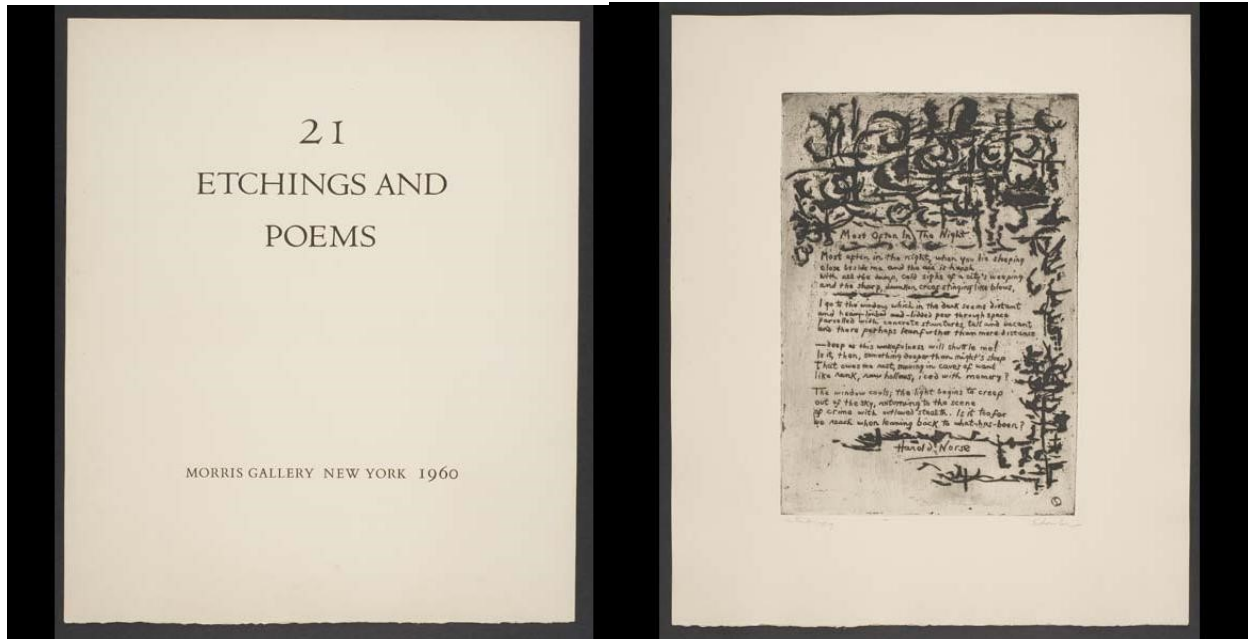
**Object Type:** Prints

**Credit Line:** Museum purchase, The Nancy Gray Sherrill, Class of 1954, Collection Acquisition Fund

**Object No.:** 2007.6

**Location:** Not On View

**Rights:** Copyright is retained in accordance with U.S. Copyright laws.



Artist: Schanker, Louis

Culture: American

Title: *Most Often in the Night, from the portfolio "21 Etchings and Poems"*

Date: ca. 1951-1958 (printed 1955-1958, published 1960)

Medium: Etching and aquatint with foul biting

Edition: 50

Dimensions: sheet: 19 7/8 in. x 16 7/8 in. (50.5 cm x 42.9 cm); image: 13 3/4 in. x 9 7/8 in. (34.9 cm x 25.1 cm)

Object Type: Prints

Credit Line: Museum purchase, The Nancy Gray Sherrill, Class of 1954, Collection Acquisition Fund

Object No.: 2007.155.21

Location: Not On View

Rights: Copyright is retained in accordance with U.S. Copyright laws.